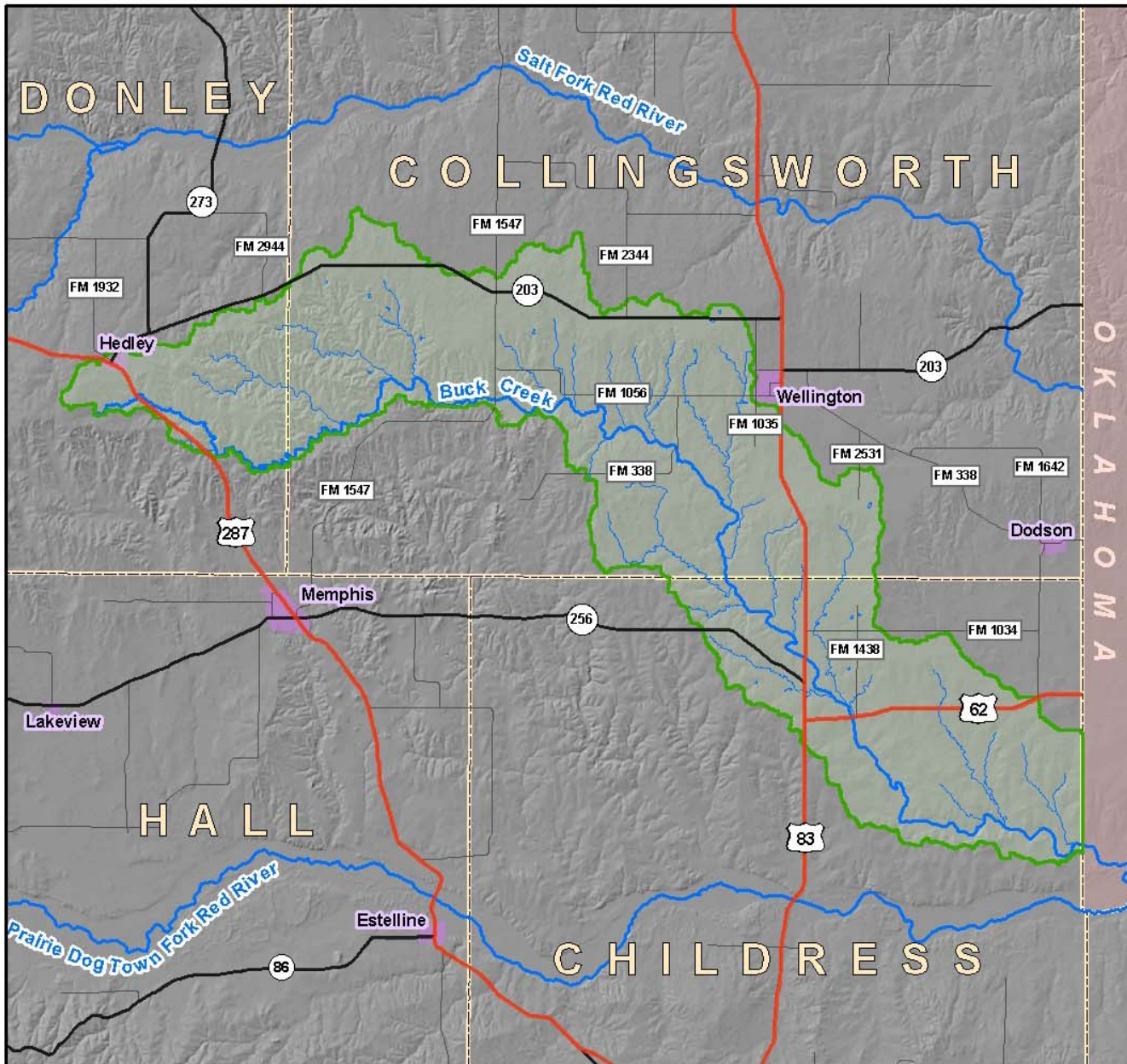


Buck Creek Watershed



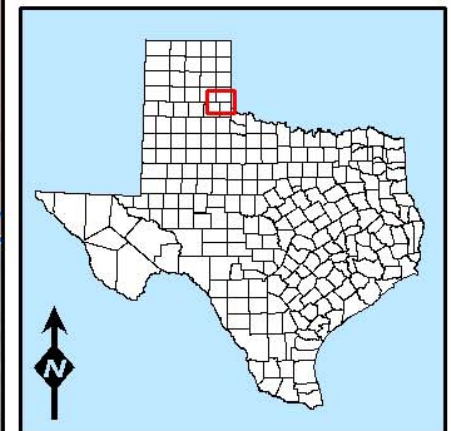

 Texas Commission on Environmental Quality
 Total Maximum Daily Loads Program
 Mail Code 150
 P.O. Box 13087
 Austin, Texas 78711-3087

Buck Creek - Segment 207A
 North and Northeast Texas -
 Bacteria from Non Point Sources

-  U.S. Highways
-  State Highways
-  Ranch Roads
-  Major Streams
-  Stream Traces
-  Watershed
-  City Boundaries
-  County Boundaries


 0 2 4 8 Miles

Texas Statewide Mapping System (TSMS) Projection
 Map Created on May 31, 2002



This map was generated by the Total Maximum Daily Loads Program of the Texas Commission on Environmental Quality. No claims are made to the accuracy or completeness of the data or to its suitability for a particular use. For more information concerning this map, contact William Pugatch, GIS Specialist, TMDL Program, at (512) 239-5559 or send an e-mail to wpugatch@tceq.state.tx.us.

Buck Creek Watershed Land Cover

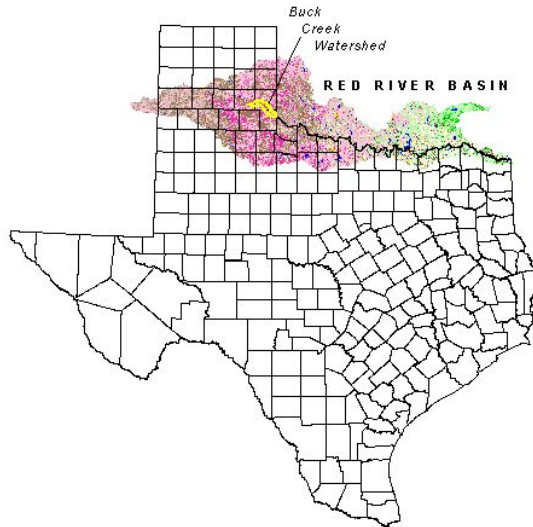
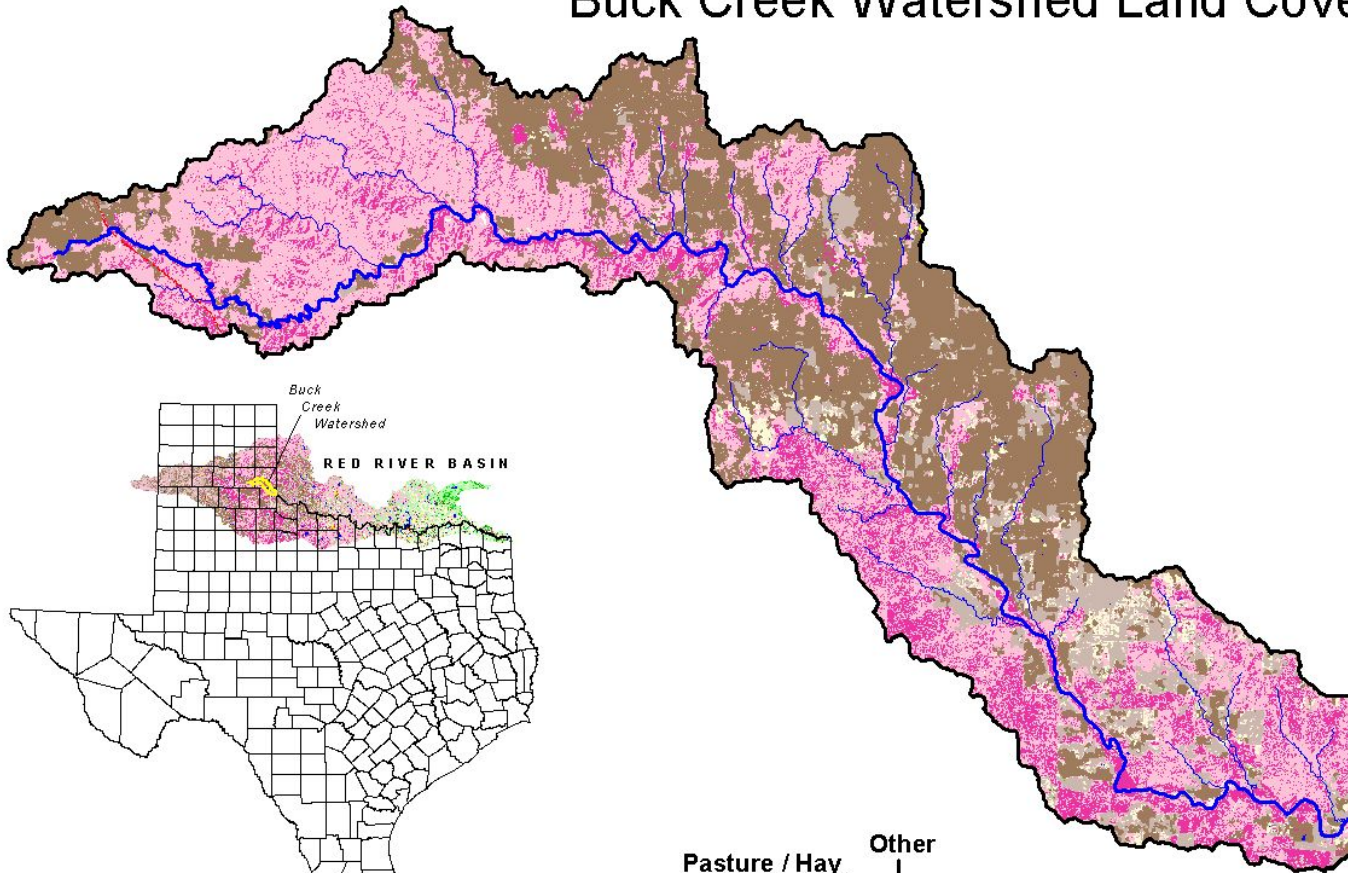


Texas Commission on Environmental Quality
 Total Maximum Daily Load Program (Mail Code 160)
 P.O. Box 13087
 Austin, Texas 78711-3087

Map Created On September 1, 2002



Texas State Mapping System (TSM) Projection

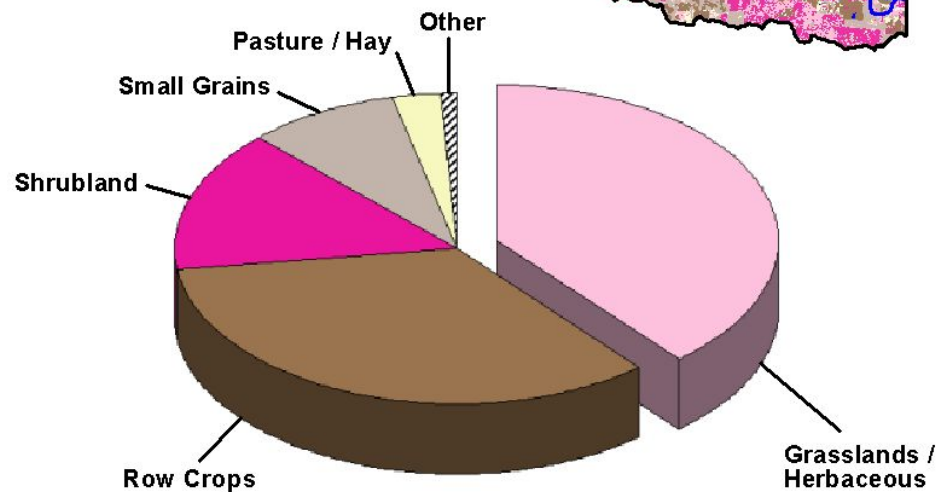


LEGEND

Source: The streams layers were obtained from the National Hydrography Dataset produced by the United States Geological Survey. The Land Cover layer was obtained from the Source Water Assessment and Protection Team at the TCEQ.

- Buck Creek
- NHD Stream Traces
- Land Cover**
- Open Water
- Low Intensity Residential
- High Intensity Residential
- Commercial / Industrial / Transportation
- Bare Rock / Sand / Clay
- Deciduous Forest
- Evergreen Forest
- Mixed Forest
- Shrubland
- Grasslands / Herbaceous
- Pasture / Hay
- Row Crops
- Small Grains
- Emergent Herbaceous Wetlands

Land Cover Breakdown	
Grasslands / Herbaceous	38.83 %
Row Crops	34.04 %
Shrubland	14.77 %
Small Grains	8.67 %
Pasture / Hay	2.80 %
Bare Rock / Sand / Clay	0.36 %
Low Intensity Residential	0.20 %
High Intensity Residential	0.11 %
Open Water	0.09 %
Commercial / Industrial / Transportation	0.08 %
Deciduous Forest	0.02 %
Evergreen Forest	0.01 %
Mixed Forest	0.01 %
Emergent Herbaceous Wetlands	< 0.01 %



This map was generated by the Total Maximum Daily Load Program of the Texas Commission on Environmental Quality. No claims are made to the accuracy or completeness of the data or to its suitability for a particular use. For more information concerning this map, contact William Pugatch, GIS Specialist, TMDL Program, at (512) 239-5559 or send an e-mail to wpugatch@tceq.state.tx.us.